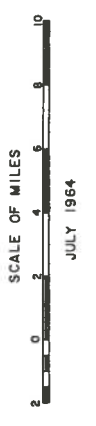


EXPLANATION
Proposed Project Facilities

- Irrigation Service Lands
- Canal
- Siphon
- Tunnel
- Dam and Reservoir
- Power Plant
- Transmission Line
- Pumping Plant
- Discharge Line

UNITED STATES
DEPARTMENT OF THE INTERIOR
BUREAU OF RECLAMATION
REGION 5
NAVAJO INDIAN IRRIGATION PROJECT
NEW MEXICO

GENERAL MAP
MAP NO. 809-529-749



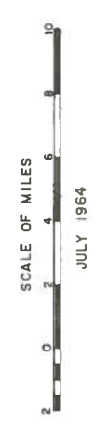
REVISED MARCH 1967 L.N.E.

NAVAJO INDIAN IRRIGATION PROJECT

UNITED STATES
DEPARTMENT OF THE INTERIOR
BUREAU OF RECLAMATION
REGION 5

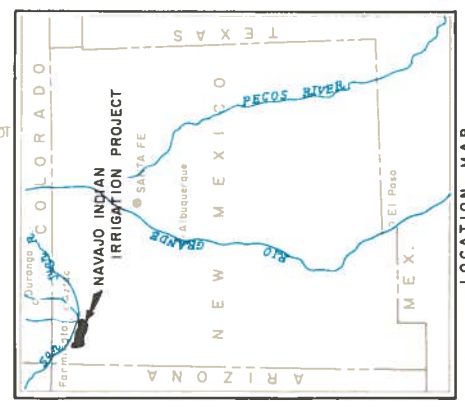
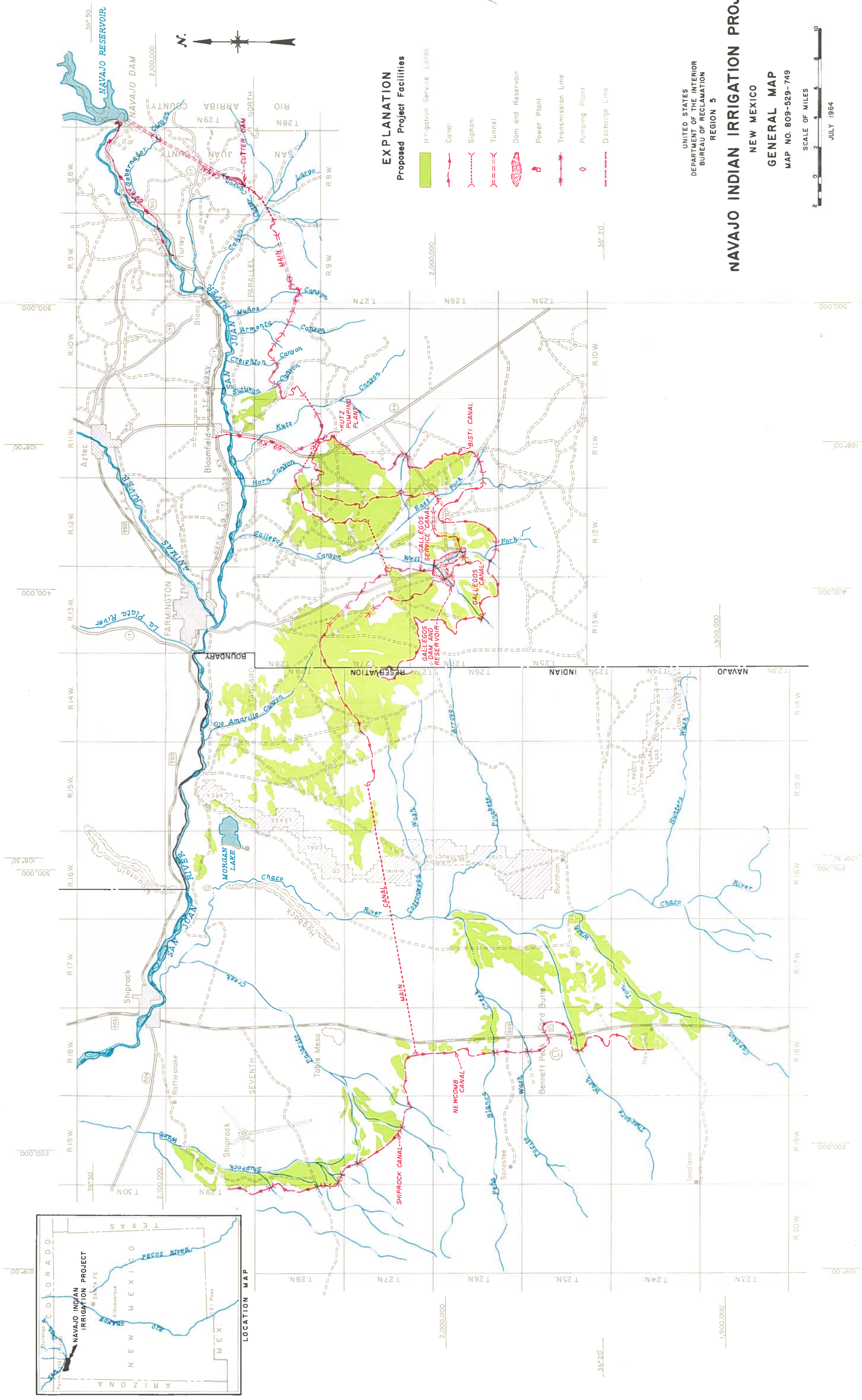
NEW MEXICO

GENERAL MAP
MAP NO. 809-529-749



EXPLANATION Proposed Project Facilities

- Irrigation Service Lands
- Canal
- Siphon
- Tunnel
- Dam and Reservoir
- Power Plant
- Transmission Line
- Pumping Plant
- Discharge Line



2,100,000

2,000,000

1,500,000

2,000,000

1,500,000

NAVajo RESERVOIR
NAVajo DAM

KUTZ PUMPING PLANT

GALLEGOS DAM AND RESERVOIR

RESERVOIR

MORGAN LAKE

Shiprock

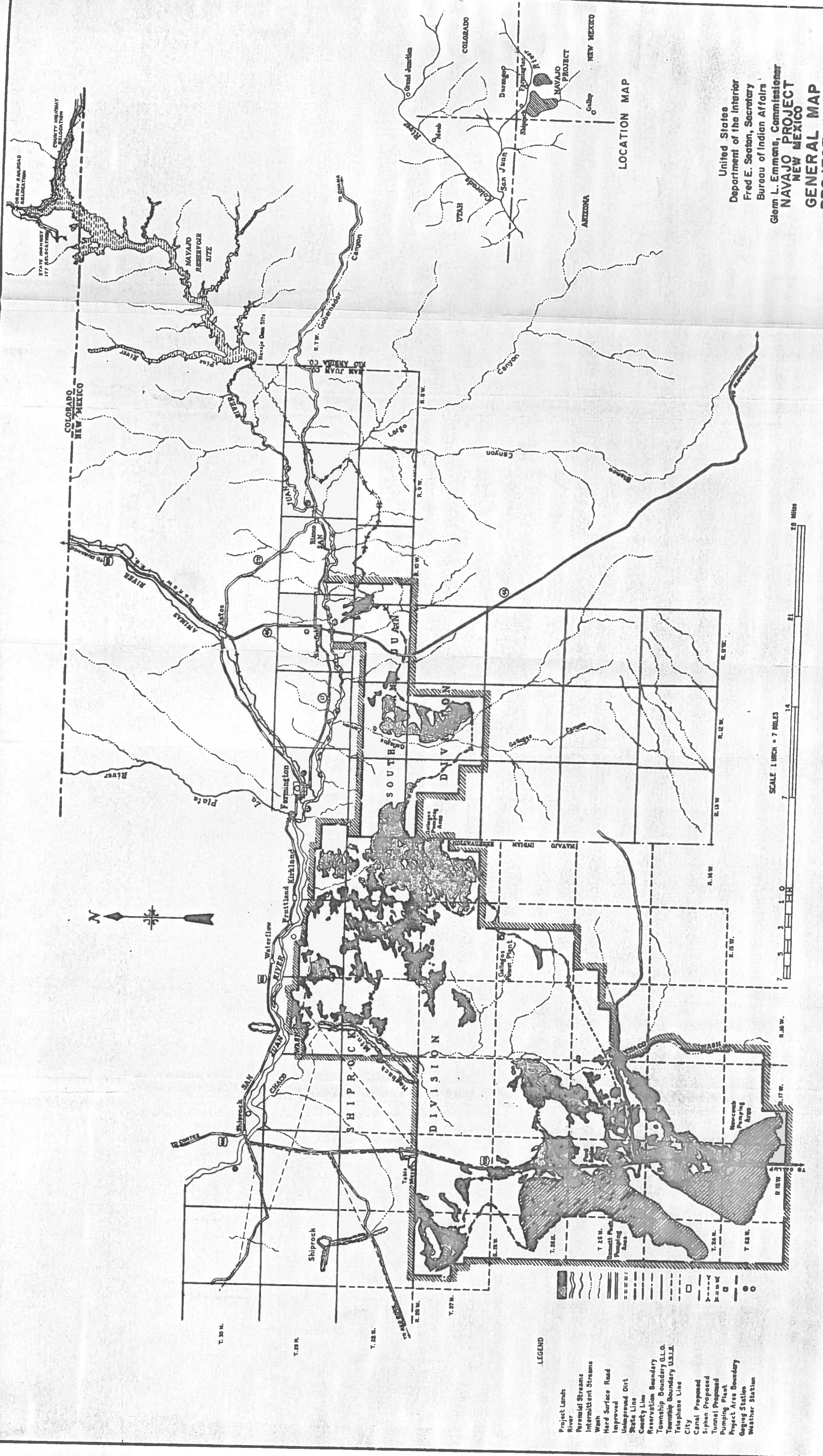
Shiprock

Shiprock

Shiprock

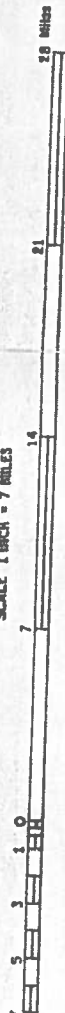
Shiprock

Shiprock

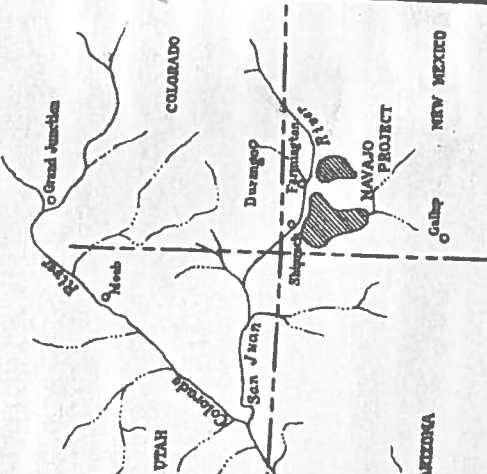


- LEGEND**
- Project Lands
 - River
 - Perennial Streams
 - Intermittent Streams
 - Wash
 - Hard Surface Road
 - Improved
 - Underground Ditch
 - State Line
 - County Line
 - Reservation Boundary
 - Township Boundary G.L.O.
 - Township Boundary U.S.I.S.
 - Telephone Line
 - City
 - Canal Proposed
 - Siphon Proposed
 - Tunnel Proposed
 - Pumping Plant
 - Project Area Boundary
 - Gaging Station
 - Weather Station

SCALE 1 INCH = 7 MILES



LOCATION MAP



United States
 Department of the Interior
 Fred E. Seaton, Secretary
 Bureau of Indian Affairs
 Glenn L. Emmans, Commissioner
NAVAJO PROJECT
 NEW MEXICO
GENERAL MAP
PROJECT AREA

NAVJO ADRIEN GALLUP, NEW MEXICO
 MARCH 14, 1957